



LuK SERVICE INFO



Clutch Kit 621 3014 09 Assembly Note

Vehicle manufacturer: Audi
SEAT
Škoda
Volkswagen

Model: A-3
Cordoba, Ibiza, Leon, Toledo
Octavia
Bora, Golf, Polo

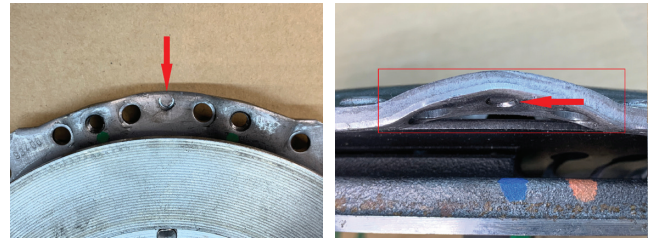


Figure 1: Incorrect Assembly

Clutch or release problems that occur following the assembly of the clutch kit with the reference number 621 3014 09 used in the vehicles mentioned above.

Note:

Warranty applications for damages arising from faulty assembly will not be accepted.

Please observe the vehicle manufacturer specifications!

Reasons for the failure:

If the flywheel isn't aligned properly to the pressure plate the centering pin at the flywheel will bend the pressure plate. Due to this engagement and disengagement problems occur.



Figure 2: Correct Assembly

To avoid causing damage to the clutch system and unnecessary repair work, the pin on the rigid flywheel surface should be aligned with the centering groove on the clutch pressure plate.

The relevant part references are available in our online catalogs on: www.repxpert.com.tr

You want more? We can help:

Phone: + 90 212 385 35 84
www.schaeffler.com.tr
www.repxpert.com.tr

