



PI 1833

For technical personnel only!
1/2

PRODUCT INFORMATION

ELECTRICAL WATER PUMPS (CWA)

COMPLETE AFTERMARKET OVERVIEW

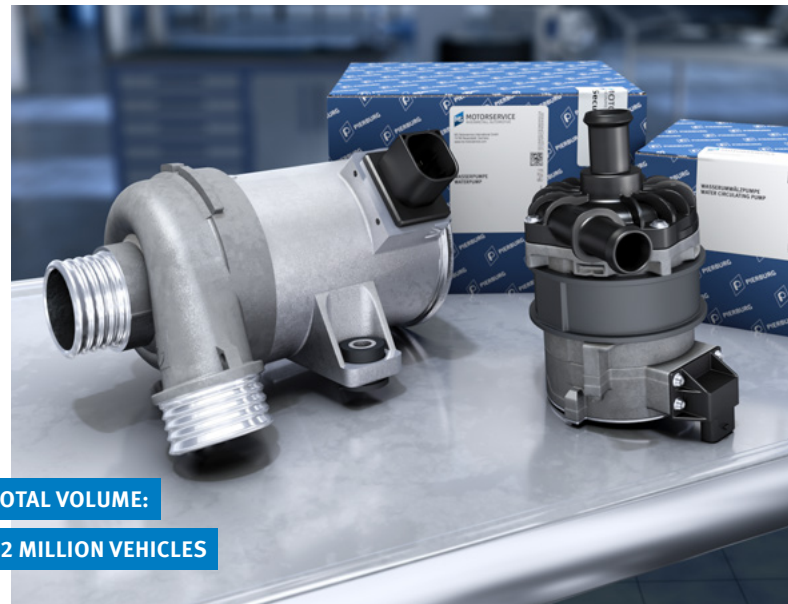
Pierburg has made the electrical water pump ready for series production, and was the world's first series-production supplier for a leading premium vehicle manufacturer.

Motorservice provides this top product in the aftermarket.

Decades of experience and expertise in the development and manufacture of pumps make Pierburg a globally recognised partner to car manufacturers. Pierburg production sites produce more than 17 million mechanical and electrical water pumps for motor vehicles and utility vehicles every year.

Type CWA (Coolant Water Aggregate) electrical water pumps in particular make a significant contribution to emission control in state-of-the-art engine designs. Their delivery rate, which is independent of the engine speed, enables demand-based cooling. This reduces the power requirements whilst also cutting down on frictional loss, fuel consumption and pollutant emissions.

Electrical water pumps are also essential for the cooling of alternative drives, such as in hybrid and electric vehicles, or in future developments of fuel cell drives.



TOTAL VOLUME:

12 MILLION VEHICLES

For example, a newly developed electrical water pump of the type CWA 150 went into series production in 2018 for a fully electric vehicle from a German premium manufacturer.

Top quality for the aftermarket

Motorservice is the sales organisation for the global aftermarket activities of Rheinmetall Automotive. We provide our customers with the full aftermarket range of Pierburg electrical water pumps of the type CWA.

NOTE

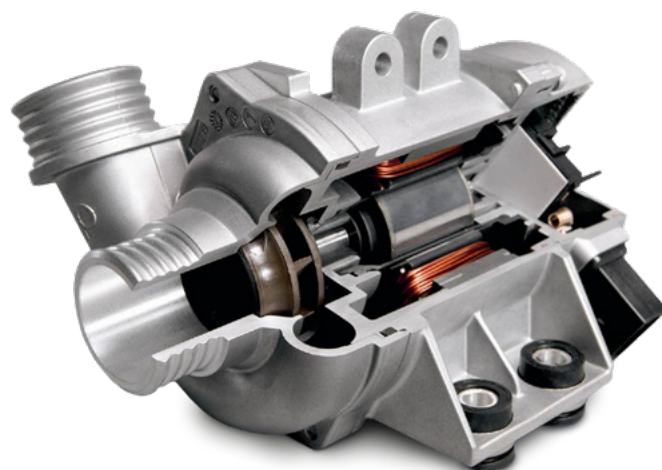
You can find a list with the complete product range on the following page.

All content including pictures and diagrams is subject to change. For assignment and replacement, refer to the current catalogues or systems based on TecAlliance.



ELECTRICAL WATER PUMPS PRODUCT RANGE

Type ¹⁾	Vehicle manufacturer	Item number	Ref. no. ²⁾
CWA 50	BMW	7.06033.44.0	11 51 7 566 335
CWA 50	BMW	7.06033.45.0	11 51 7 583 965
CWA 50	BMW	7.06033.40.0	17 12 2 284 291
CWA 50	BMW	7.06033.54.0	17 12 7 850 113
CWA 50	Daimler	7.06033.12.0	A 003 500 00 86
CWA 50	VAG	7.06033.11.0	4F0 965 569
CWA 50	VAG	7.06033.15.0	8K0 965 569
CWA 50	VAG	7.06033.31.0	7P0 965 567
CWA 50	VAG	7.06033.24.0	8K0 965 567 A
CWA 50	VAG	7.06033.32.0	8K0 965 567 B
CWA 50	Volvo	7.06033.55.0	31338384
CWA 50	Volvo	7.06033.56.0	31338399
CWA 100	Daimler	7.06754.05.0	A 000 500 04 86 (universal application)
CWA 100	Daimler	7.04933.56.0	A 000 500 19 86
CWA 100	VAG	7.04934.54.0	4N0 965 567
CWA 200	BMW	7.02851.20.0	11 51 7 586 925
CWA 200	BMW	7.02478.40.0	11 51 7 583 836
CWA 200	BMW	7.02853.20.0	11 51 7 586 929
CWA 200	BMW	7.07223.01.0	11 51 7 597 715
CWA 400	BMW	7.03665.66.0	11 51 7 604 027
CWA 400	BMW	7.02881.66.0	11 51 8 625 098
CWA 400	Daimler	7.05171.65.0	A 274 200 01 07
CWA 400	Ford	7.03335.55.0	DS7E 8C419 CB
CWA 400	Volvo	7.02702.58.0	31368715
EWP	Toyota	7.07223.00.0	161A0-39015



NOTE

If you are interested in or have questions on universal applications, please contact our sales team, department SOE. Additional universal applications are available on request.

ATTENTION

It has come to our attention that there are product fakes of the CWA 200 electrical coolant pump. We expressly warn against the use of these product fakes. None of the pumps in our possession fulfilled the requirements of the vehicle manufacturer. In the event of a failure of such a pump, the engine overheats and this can result in severe consequential damage.

For your safety, we take legal steps against any form of illegal import and the introduction to the market of product fakes.

1) The type designation indicates the power consumption of an electrical water pump.
Example of CWA 50: Cooling Water Aggregate, 50 W power consumption

2) The reference numbers provided are for comparison purposes only and must not be used on invoices to the consumer.