

# Assembly instructions for oil change kits for automatic transmission

**MEYLE no. 300 135 1005 | 100 135 0005**

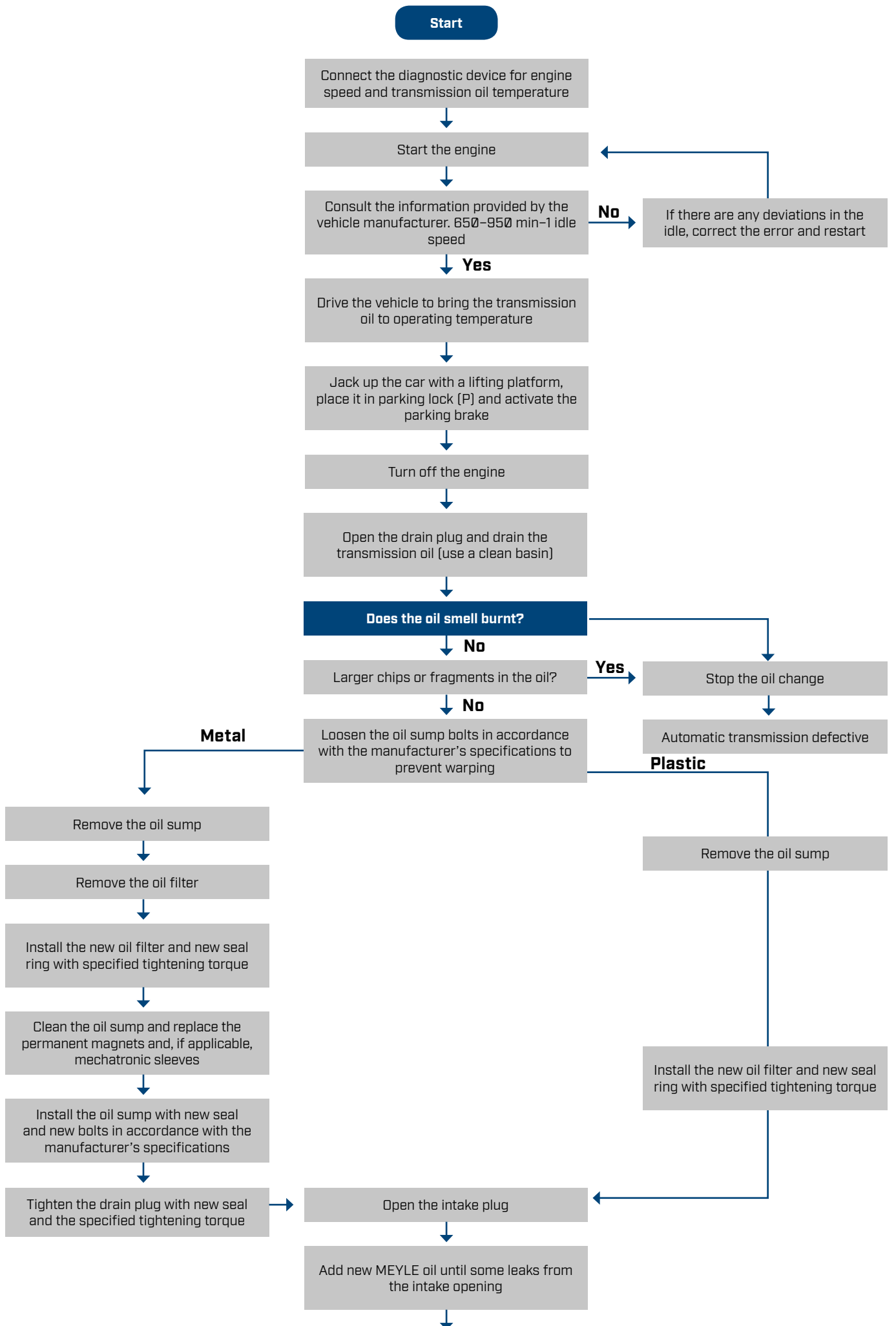
**Short no. MOK0035 | MOK0010**

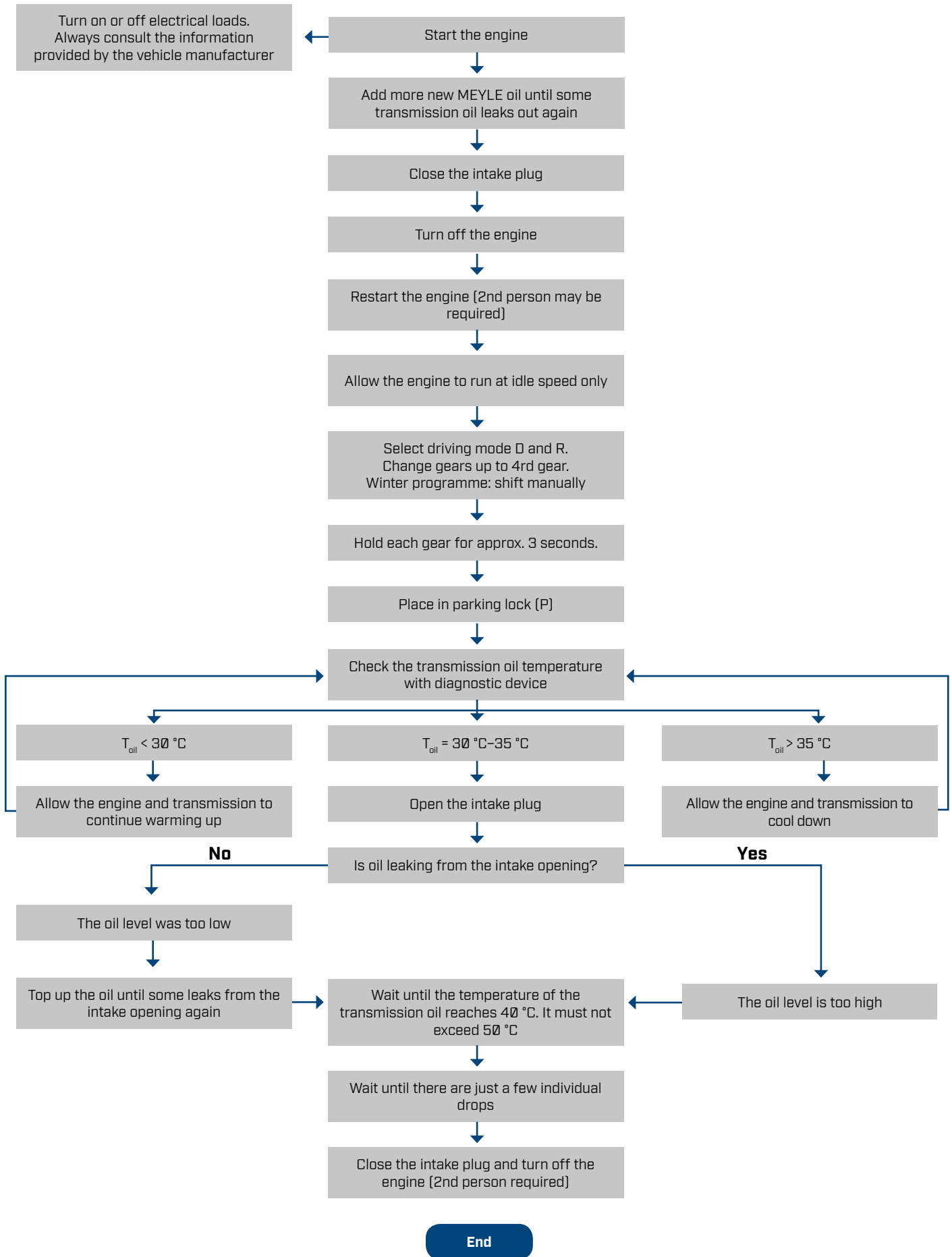
Gear types

6HP28 | 6HP28X | 6HP28AF



**Installation by qualified personnel only.  
Car manufacturer's instructions to be  
observed closely.**





**NB: Depending on the type of transmission, it may have a bypass valve which opens or closes the oil circuit to the oil cooler, which is why the drive should be sufficient to ensure the transmission oil temperature reaches at least 75 °C. After the drive, allow the transmission to cool down, check the oil level again and correct if necessary.**